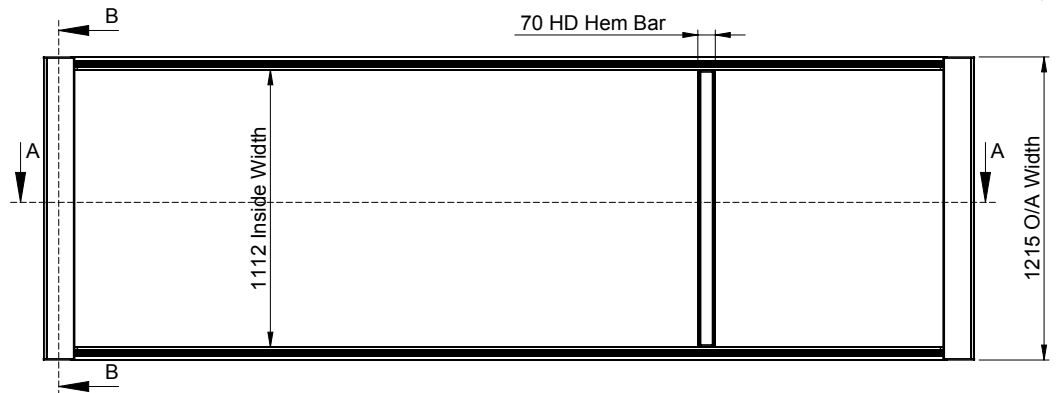
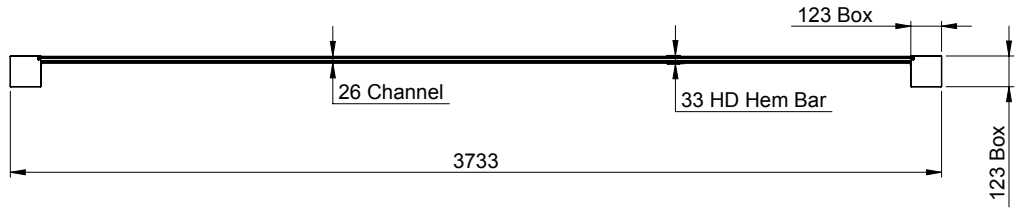
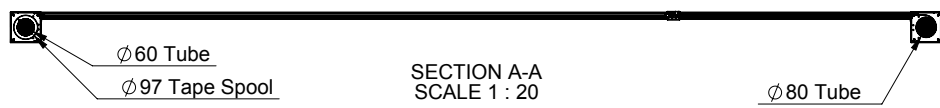
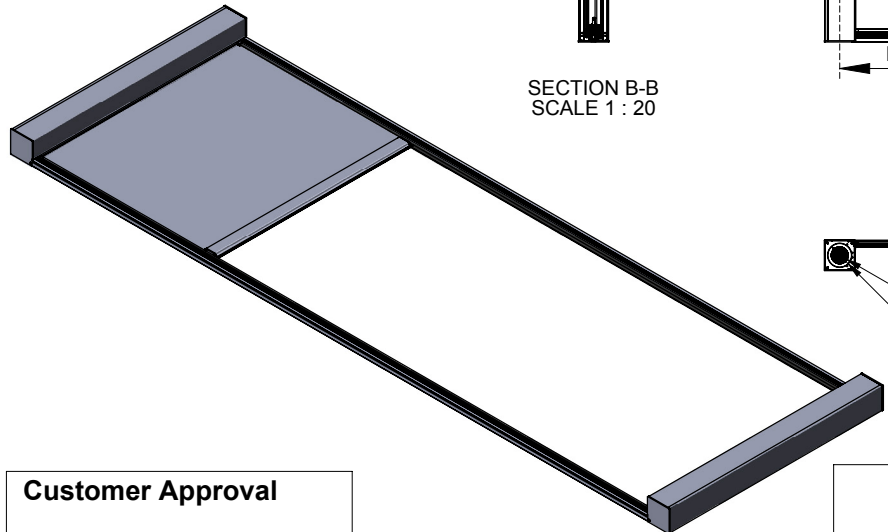


REV.	DESCRIPTION	DRAWN	DATE
------	-------------	-------	------



SECTION B-B
SCALE 1 : 20



SECTION A-A
SCALE 1 : 20


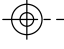
Customer Approval

Company Name:.....

Approved By:.....


Signature:.....

Date:.....

 ROLLEASE ACMEDA <small>PRECISION IN MOTION</small>		TITLE: #16038 - Skylight System Customer Specific	
		PART NUMBER: Custom Box120 Zipscreen Skylight	
DRAWN: M. Glover 20/05/16		DRAWING NUMBER: Concept 4 - Skylight	
CHECKED: A. Guerra 20/05/16		TOLERANCE: 0 < 20 ± 0.10 20 < 40 ± 0.20 40 < 100 ± 0.30 (UNLESS OTHERWISE SPECIFIED)	
APPROVED: A. Guerra 20/05/16		MATERIAL: -	
<small>PROPRIETARY & CONFIDENTIAL THE INFORMATION CONTAINED IN THIS DRAWING IS THE SOLE PROPERTY OF ROLLEASE ACMEDA. ANY REPRODUCTION IN PART OR WHOLE WITHOUT THE WRITTEN PERMISSION OF ROLLEASE ACMEDA IS PROHIBITED.</small>		FINISH: -	
		COLOUR: -	
		UNSPECIFIED RADIUS: 0.5mm	
		WEIGHT: 37687.55	
© 2016 ROLLEASE ACMEDA		DO NOT SCALE	
		SCALE: 1:20	
		DIMENSIONS IN MILLIMETERS	
		SIZE: A3	
		DWG 1 OF 2	
		REV. 01	



ITEM NO.	PART NUMBER	DESCRIPTION	MATERIAL	WIDTH	LENGTH	QTY.
1	SB01-1325-xxxLLL	Box 120 - Cover, 'SH-33' Square - 5.8m Length	6063-T5	-	1204	2
2	SB02-1201-025020	Box 120-Universal End Plate Set - With Ears	Mild Steel Sheet 2mm Thick, Y.S 235 Mpa Min	-	-	2
3	SB91-0011-XXXLLL	Fabric Brush - T-Slot Fit - 5mm High x 4.8mm Wide	-	-	1200	2
4	SB02-1220-xxx020	Box 120 'SH33' End Plate Cover	HDPE	-	-	2
5	SB01-1340-xxxLLL	BOX Square 120 - TOP & BACK - 5.8m Length	6063-T5	-	1204	2
6	RB91-0280-000LLL	SYS60 80HD Aluminium Tube • D.D 80.0mm	6063S-T5	-	1094	1
7	SB11-0815-050580	Zip Tube Reducer Long	-	-	-	2
8	RB91-0260-xxxLLL	SYS60 60STD Aluminium Tube • D.D 60.0mm	6063S-T5	-	1167	1
9	S60 Fabric Roll	Fabric	-	1132	3900	1
10	RB10-6400-050001	RB10 Idler Head Adapter	PA 6 GF 30	-	-	3
11	RB10-6200-xxx001	RB10 Bearing Idler	-	-	-	2
12	RB10-6000-xxx060	RB10 Tube Adapter	ABS	-	-	3
13	RB10-6220-050001	RB10 Pre-Tension Idler - Left Hand - SYS60	-	-	-	1
14	Somfy Round Head Motor	-	-	-	-	1
15	MG56-0711-xxx950	M50 Motor Bracket Adaptor - SOMFY/BECKER	Mild Steel Sheet 3mm Thick (250 MPa Grade Min.)	-	-	1
16	RB56-0136-050501	M50 Crown Wheel - SYS60 60STD Tube - SOMFY Soreesse 50	-	-	-	1
17	RB56-0105-xxx501	M50 Drive Wheel - SYS60 - SOMFY LTI AL TUS 50	PA6GF30	-	-	1
18	RB56-0701-xxx050	M50 Motor Adaptor set + screws - S60 - SOMFY 50 ROUND	-	-	-	1
19	RB10-6040-xxx051	RB10 Booster Extra Heavy (LH)	-	-	-	1
20	SB06-1303-xxxLLL	HD HEM Weight Bar	6063-T5	-	1093	1
21	SB06-1330-050001	HD HemBar End Cap (MODIFIED)	Heavy-Duty UV-Stable Plastic	-	-	2
22	SB06-1321-XXXLLL	Weight Bar Cover 'SH' - W3 13X 3	PVC	-	1093	1
23	SB04-0702-xxxLLL	ZIPSCREEN - U' Mounting Rail	6063S-T5	-	3490	2
24	SB05-1411-050001	Zipscreen Inner Rail Funnel & Stop Set	-	-	-	4
25	SB04-0701-xxxLLL	ZIPSCREEN - Zip Inner Rail	6063-T5	-	3460	2
26	SS48-1060-xxx090	S60 Roman Lift Spool	ABS - Fire Retardant	-	-	2
27	CCXX-XXXX-XXXXXX	*NEW* SHY ZIP	-	-	3900	1
28	SH91-0106-xxx400	Z-Lock Zip No.4 Gauge	-	-	1072	1
29	SB06-1332-060020	Wire Guide Ceramic Block	-	-	-	2
30	SB91-0408-xxx015	7.2mm Spline with 15mm Tail	-	-	1093	1

 ROLLESE ACMEDA <small>PRECISION IN MOTION</small>				TITLE:	
				PART NUMBER:	
DRAWN: M. Glover		20/05/16		DRAWING NUMBER: Concept 4 - Skylight	
CHECKED: A. Guerra		20/05/16		TOLERANCE: 0 < 20 ± 0.10 20 < 40 ± 0.20 40 < 100 ± 0.30 (UNLESS OTHERWISE SPECIFIED)	
APPROVED: A. Guerra		20/05/16		MATERIAL:	
<small>PROPRIETARY & CONFIDENTIAL THE INFORMATION CONTAINED IN THIS DRAWING IS THE SOLE PROPERTY OF ROLLESE ACMEDA. ANY REPRODUCTION IN PART OR WHOLE WITHOUT THE WRITTEN PERMISSION OF ROLLESE ACMEDA IS PROHIBITED.</small>				FINISH:	
				COLOUR:	
<small>© 2016 ROLLESE ACMEDA</small>				WEIGHT:	
				DO NOT SCALE	
<small>© 2016 ROLLESE ACMEDA</small>				DIMENSIONS IN MILLIMETERS	
				DWG 2 OF 2	
<small>© 2016 ROLLESE ACMEDA</small>				REV. 01	

