

**AERO - SINGLE ROLLER SYSTEM S45**

Our new AERO single roller system, offers a premium aesthetically pleasing and technologically advanced solution. Controlled with either a chain or independent spring mechanism, the shade will open and close to your preferred top and bottom locations in a smooth and controlled motion, with one simple touch.

**AESTHETICAL FEATURES**

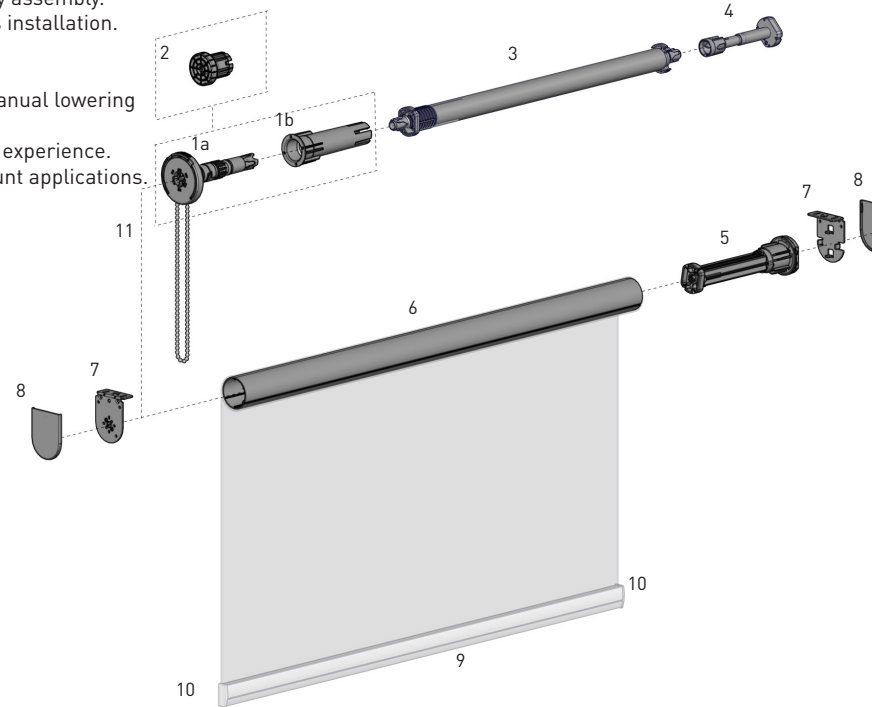
- Minimal light gaps
- Compatible with S45 System bracket covers for a neat finish.
- Optional CF90 Cassette Fascia in square or round profiles.

**PRODUCTION / ASSEMBLY FEATURES**

- Easy pre-tensioning through control bracket
- Revolutionary top and bottom limit setting function, with easy push button control.
- Color coded LH & RH hardware for quick & easy assembly.
- Self-locating chain winder feature for effortless installation.

**FUNCTIONAL BENEFITS**

- Semi-Automatic functionality - auto rise and manual lowering
- Alternative chainfree operation
- Top and bottom limit settings for a refined user experience.
- Can be installed onto ceiling, wall or inside mount applications.
- Patent protected
- Decelerator for smooth controlled movement.
- Compatible with Easy-Link (refer to charts)



\*LH Control Shown

**SYSTEM INDEX**

1a	AERO Single Chain Winder
	RB12-3100-xxx140 - Chain Control LH
	RB12-3100-xxx240 - Chain Control RH
1b	AERO Connector - Chain Winder/Booster
	RB12-4510-xxx045
2	AERO Single Chainfree Control   S45
	RB12-3200-xxx040 - Chainfree Control
3	Booster Uni.
	RB12-4500-xxx045 - Short
	RB12-4501-xxx045 - Light
	RB12-4502-xxx045 - Standard
	RB12-4503-xxx045 - Heavy Duty
4	Booster Decelerator
	RB12-7101-xxx145 - LH
	RB12-7102-xxx245 - RH
5	AERO Limiter Idle End
	RB12-6001-xxx145 - LH
	RB12-6002-xxx245 - RH
6	S45 Aluminum Tube
	RB93-044#-000580 - LIGHT, STD or HD
7	AERO Single LX Bracket - Chain Winder/Limiter
	RB12-2100-xxx040 - Chain Control
	RB12-2200-xxx040 - Chainfree Control
8	Bracket Cover LX/VX
	RB08-4151-xxx040
9	D30 SILENT Medium Alum. Bottom Rail
	RB91-1232-xxx580
10	D30 Medium Bottom Rail End Caps
	RB91-2131-xxx002
11	Chain and Accessories

# = size, LLL = length, xxx= colour

**COLOR RANGE**



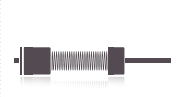
pure white 069  
silver grey 338

**CONTROL OPTIONS**

**CHAIN CONTROL**

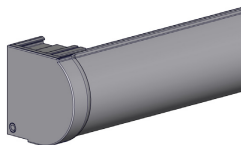


**SPRING**

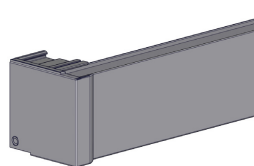


**SYSTEM OPTIONS**

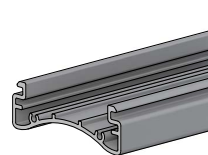
Round Cassette



Square Cassette

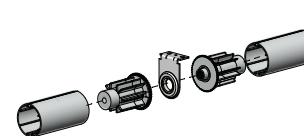


Mounting Rail



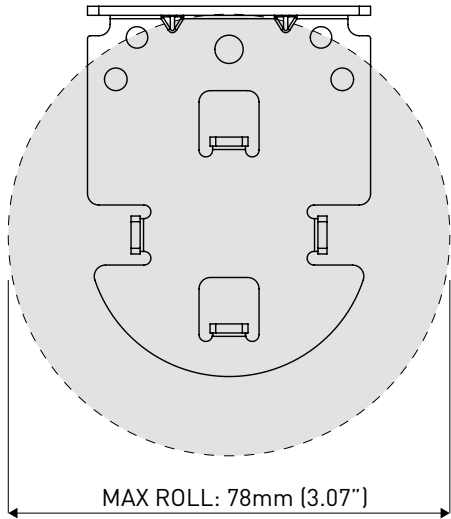
**SYSTEM UPGRADES**

Easy-Link

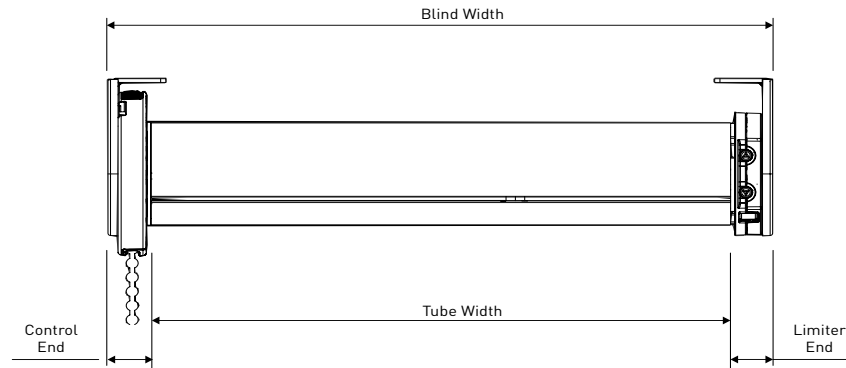


**SPECIFICATIONS**

**MAX ROLL**

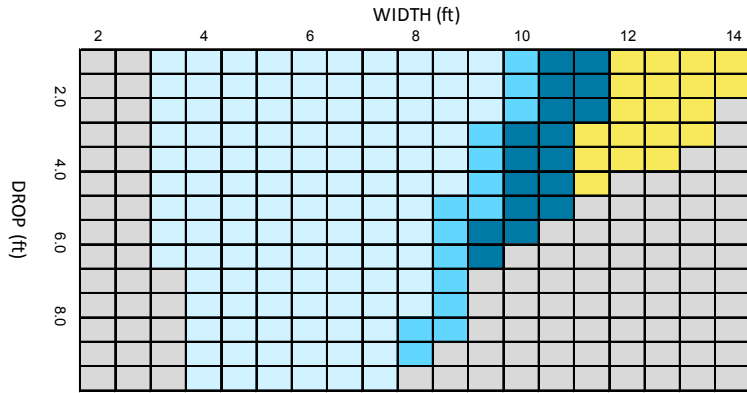


**DEDUCTION**



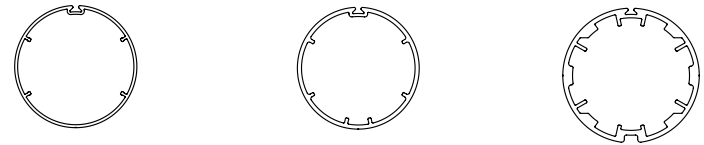
CONTROL TYPE	CONTROL END		LIMITER END	
	With Covers	WithOUT Covers	With Covers	WithOUT Covers
CHAIN CONTROL	18mm (0.71")	16mm (0.63")	17mm (0.67")	15mm (0.59")
CHAINFREE CONTROL	15mm (0.59")	14mm (0.55")	17mm (0.67")	15mm (0.59")

**SYSTEM CAPACITY**



LEGEND	DESCRIPTION
Light Blue	S45 LIGHT   STANDARD   HEAVY DUTY
Medium Blue	S45 STANDARD   HEAVY DUTY
Dark Blue	S45 HEAVY DUTY
Yellow	EASY-LINK
Grey	OUTSIDE SPECIFICATION

**TUBE SPECS**



**S45 LIGHT T-Spline Tube**

Code: RB93-0443-000LLL  
 RB93-6443-000LLL (with D/S tape)  
 OD: 43mm [1.69"]  
 Length: 5.8m [19.029ft]

**S45 STANDARD T-Spline Tube**

Code: RB93-0444-000LLL  
 RB93-6444-000LLL (with D/S tape)  
 OD: 44mm [1.73"]  
 Length: 5.8m [19.029ft]

**S45 HEAVY DUTY T-Spline Tube**

Code: RB93-0449-000LLL  
 RB93-6449-000LLL (with D/S tape)  
 OD: 49mm [1.92"]  
 Length: 5.8m [19.029ft]