

## ZIPSCREEN

Zipscreen is the ultimate external screening solution for any outdoor area or window. Specially designed for alfresco entertaining areas such as pergolas, verandas, and balconies, it offers privacy and protection from the sun, wind, rain, and insects all year round. Also ideal for home and office windows, it serves as a sleek, secure, and durable alternative to traditional awnings & outdoor roller shutters. Your custom designed system can be made in widths of up to 5 meters or drops up to 4 meters, offering you an external solution to fit almost any area.

## AESTHETIC FEATURES

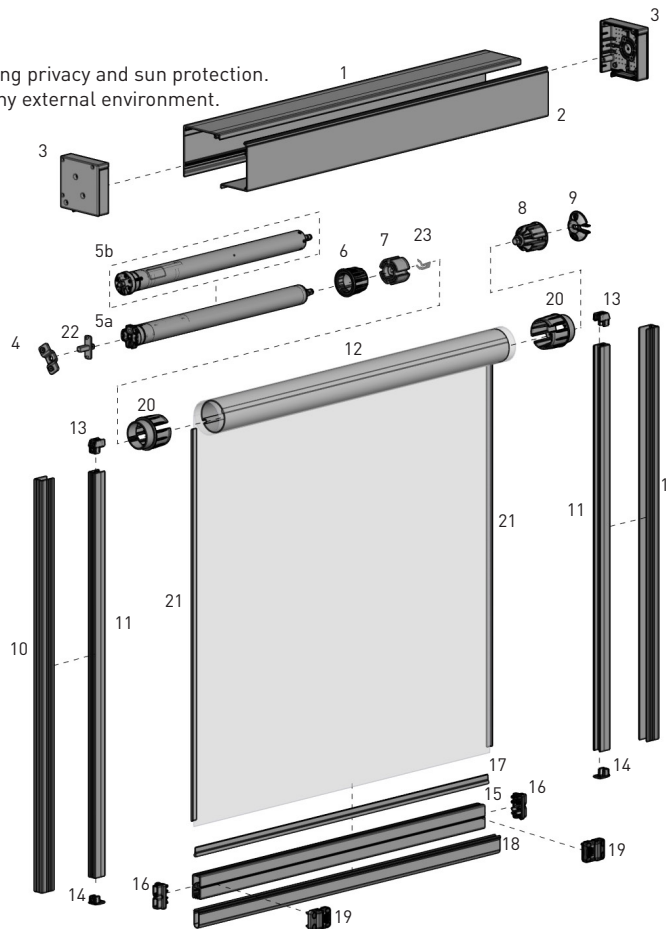
- An ideal solution for enclosing Pergolas, Al Fresco & outdoor entertaining areas offering privacy and sun protection.
- Wide range of standard colours and ability to custom powder-coat extrusions to suit any external environment.
- Choice of open or enclosed roller.
- Sleek and contemporary square cassette box.
- Clean, architectural look.

## ASSEMBLY / INSTALLATION BENEFITS

- Adjustable side guides to enable installation in out of square areas.
- Choice of F56 or F72 one piece weight bars for easy installation.
- Two piece cassette box for easy installation.
- Choice of 78 aluminium and steel tubes.
- Zipscreen components are interchangeable with the Veue Drop Awnings suite.
- One reducer, and a combined booster and pre tension idler means less inventory.
- End plates overlap the edges of the front and back covers to hide cutting imperfections.
- Hinges are located on the end plates for easy headbox installation.

## FUNCTIONAL BENEFITS

- A semi-fascia is now available, in addition to a fully-enclosed box or open bracket solution offering multiple configurations
- Improved funnel design to guide zip into channels
- Exterior grade powder coated finish.
- Hidden side retention system to keep fabric secure in channels.
- The stronger F56 weight bar offers more rigidity over wider spans.
- The new one piece F72 heavy duty weightbar offers outstanding performance over large spans
- Choice of weight bar bubble or weather seal strip for uneven floors.
- An all-inclusive end plate set means that cover caps are no longer required. The universal end plate set comes with a pre-notched section that can be 'snapped-off' to accommodate all control options.



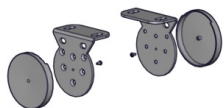
## SYSTEM INDEX

- 1 Box 120 Back  
RE01-0101-xxx580
- 2 Box 120 Cover  
RE01-0102-xxx580 - FULL  
RE01-0103-xxx580 - FASCIA
- 3 Box 120 End Plate Set  
RE01-1101-xxx120
- 4 M50 Motor Bracket + Screws - Universal Motors  
RE01-0601-025000
- 5 Automate FT Electronic Limit Motor  
a. MT01-1145-06900X - US  
b. MT01-1145-050001 - AU
- 6 Automate Crown Wheel/Somfy  
RE01-0663-050518
- 7 Automate Drive Wheel 78mm  
RE01-0680-050518 - IMPACT DETECTION  
RE01-0679-050508 - NO IMPACT DETECTION - US ONLY
- 8 Bearing Idler  
RE01-0203-050063
- 9 Idler/Spring Adaptor  
RE01-0204-xxx000
- 10 Zipscreen | U Mounting Rail  
SB04-0702-xxxLLL
- 11 Zipscreen | Zip Inner Rail  
SB04-0701-xxxLLL
- 12 Tube 78mm  
RE01-0378-000580 - Aluminium  
AW92-0901-xxxLLL - Steel
- 13 Zipscreen | Inner Rail Funnel & Stop Set  
SB05-1411-050001
- 14 Zipscreen | Zip Inner Rail Bottom Cap Set  
SB05-1511-050001
- 15 F56 Weight Bar  
RE15-0101-000580
- 16 F56 Weight Bar Zip End Cap Set  
RE20-0302-xxx001
- 17 7.2mm Spline w/15mm Tail  
SB91-0408-001015
- 18 Ultra Lock Seal  
SB91-004-050075
- 19 Zipscreen Ultra Lock  
RE15-0401-050001 - AU ONLY
- 20 Zipscreen Reducer 78 | 63mm  
RE20-0301-050078
- 21 Zip | No.6 Gauge  
SH91-0135-050200
- 22 Automate | 10mm Square Shaft + Screws | SLIM Motor  
RE01-0603-025000 - US ONLY
- 23 Automate | Drive Wheel CLIP for FT Motor  
MTCLIP-35-45 - US ONLY

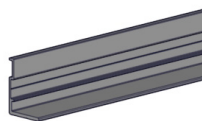
xxx= colour

## SYSTEM OPTIONS

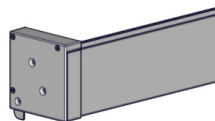
## OPEN BRACKETS



## L-FIXING RAIL

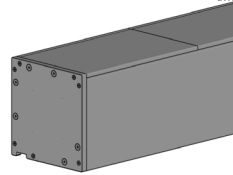


## FASCIA



## SYSTEM UPGRADES

## ZIPSCREEN EXTREME



## COLOR RANGE



## CONTROL OPTIONS

## MOTORIZED



## CRANK GEAR

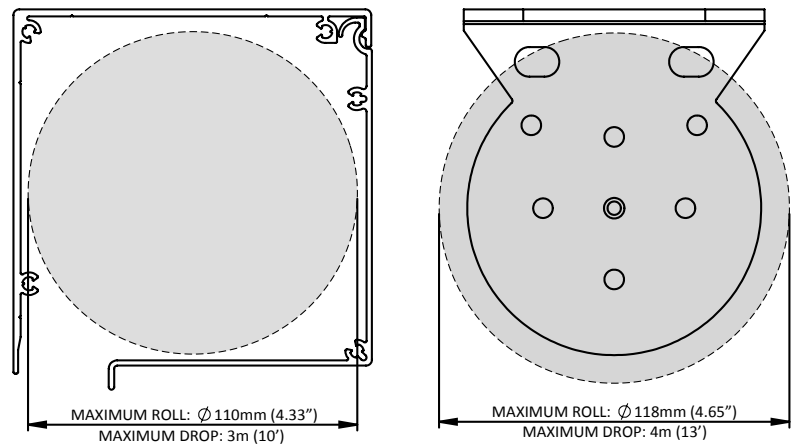


## SPRING

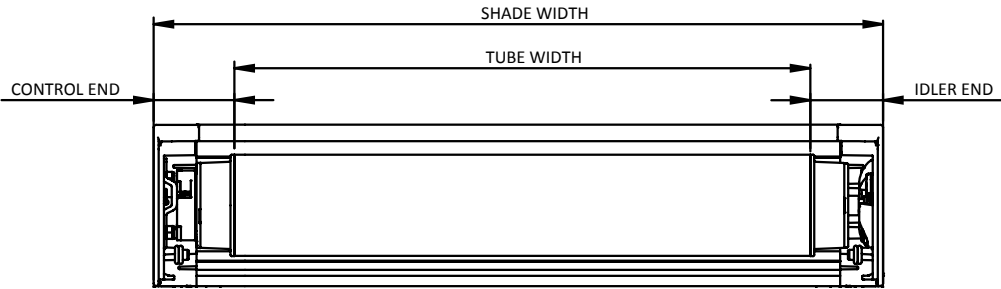


SPECIFICATIONS

MAX ROLL



DEDUCTION



OVERALL DEDUCTION		
BOX	FACE FIX	123mm (4.84")
	SIDE FIX	118mm (4.65")
OPEN	FACE FIX	132mm (5.20")*
	SIDE FIX	114mm (4.48")

\*For Zipscreen, Open, Face Fix Installations without covers take 14mm off the deduction value, if using Face Fix U-Rail take 18mm off.

SYSTEM CAPACITY

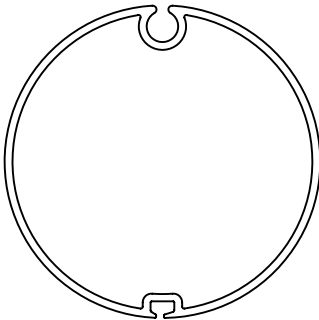
		WIDTH																		
DROP		3	4	5	6	7	8	9	10	11	12	13	14	15	16					
ft	m	0.75	1.00	1.25	1.50	1.75	2.00	2.25	2.50	2.75	3.00	3.25	3.50	3.75	4.00	4.25	4.50	4.75	5.00	m
3	0.75																			Box & Open Blinds
4	1.00																			
5	1.25																			
6	1.50																			
7	1.75																			
8	2.00																			
9	2.25																			
10	2.50																			
11	2.75																			
12	3.00																			
13	3.25																		Open Blinds Only	
14	3.50																			
15	3.75																			
16	4.00																			

Parameters: 573gsm (16.90 oz/yd<sup>2</sup>) Fabric, F56 Weight Bar

CONTROL	TUBE
SPRING   GEAR   MOTOR	78mm
	ABOVE OPTIMUM PERFORMANCE FOR 78mm

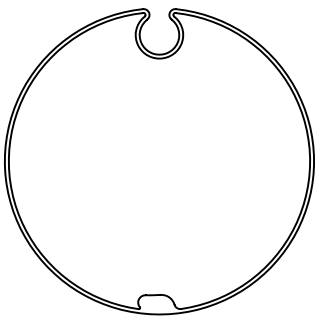
SPRING - Minimum Shade Width = 0.8m (3ft) || GEAR - Minimum Shade Width = 0.5m (2ft) || MOTOR - Minimum Shade Width = 0.8m (3ft)

TUBE SPECS



ALUMINUM TUBE 78mm

Code: RE01-0378-000580  
OD: 80mm (3.15")  
Length: 5.8m (19ft)



STEEL TUBE 78mm

Code: AW92-0901-000LLL  
OD: 78mm (3.07")  
Length: 5m (16ft), 7m (23ft)