

POLAR / BLACKOUT

SPECIFICATION

Fire Retardant: NFPA 701

Fabric Width: 118"

Roll Length: 30 yds

Composition: 100% Polyester with Acrylic Coating

Weave: Plain

Openness Factor: Blackout

Thickness: 0.5mm ± 0.05mm

Weight: 420 gsm/12.4 ozy

Cutting: Ultrasonic, Crush, Cold

Welding/Bonding Tape: Yes

Railroading: Not Recommended and subject to testing.



Care & Cleaning Instructions:

Dust can be removed from the fabric by vacuum cleaning or soft duster. Light stains can be removed with sponge and soapy water. Avoid using detergents, solvents as it may cause damage to the coating of the fabric.

Polar is composed of PVC-free polyester yarns with foam backing. Simple yet sophisticated, the color palette complements a broad spectrum of modern décor and interior spaces. This blackout roller shade fabric has quickly become one of our top and fastest seller. It blocks light for maximum light control and complete privacy.



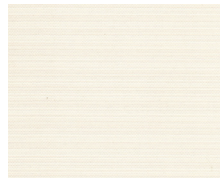
Ice



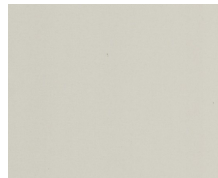
Gray Cloud



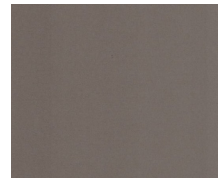
Silver City



Ivory



Camel



Chocolate

