



SKYLIGHT

PRODUCT SPECIFICATIONS

March 2020



www.shadesbymatiss.com | T. 800 493 2040 | email: info@shadesbymatiss.com



CONTENTS

SECTION A WARRANTY	01
SECTION B SYSTEM OPTIONS	02
SYSTEM OPTIONS	02
COLOR OPTIONS ..	02
SECTION C OVERVIEW (ZIPSCREEN)	03
GENERAL SCHEMATICS	03
SECTION D SYSTEM SPECIFICATIONS (ZIPSCREEN)	04
ZIPSCREEN 60MM FABRIC TUBE	04
ZIPSCREEN 80MM FABRIC TUBE (BOX 120 ONLY)	05
SECTION E OVERVIEW (WIREGUIDE)	06
GENERAL SCHEMATICS	06
SECTION F SYSTEM SPECIFICATIONS (WIREGUIDE)	07
WIREGUIDE 60MM FABRIC TUBE	07
WIREGUIDE 80MM FABRIC TUBE (BOX 120 ONLY)	08
SECTION G SYSTEM SPECIFICATIONS	09
ARCHITECTURAL VIEWS	09
MAXIMUM ROLL DIAMETERS	10
ZIPSCREEN MEASURE & SPECIFY	11

DISCLAIMER

INTRODUCTION

This Product Specifications manual for Skylights has been produced by Rollease Acmeda to supply the necessary information for the safe and correct installation of Skylights.

DISCLAIMER

Rollease Acmeda has used reasonable care in preparing the information included in this document, but makes no representations or warranties as to the completeness or accuracy of the information. Information is supplied upon the condition that the persons receiving the information will make their own determination as to its suitability for their purposes prior to use. Rollease Acmeda assumes no liability whatsoever for any damages incurred by you resulting from errors in or omissions from the information included herein. Rollease Acmeda reserves the right to make changes without further notice to any products to improve reliability, function or design.

COPYRIGHT

COPYRIGHT © ROLLEASE ACMEDA

All rights are reserved. No part of this document may be reproduced or utilised in any means, by any means, electronic or mechanical including photocopying, recordings, or by any information storage or retrieval system, without the express permission from Rollease Acmeda.



SECTION A | WARRANTY

Rollease Acmeda provide a 5 year hardware warranty against defects to the original purchaser.

The Rollease Acmeda 5 year hardware warranty is not to be transferred to the end consumer.

The Rollease Acmeda 5 year hardware warranty is limited to the repair or resupply of defective hardware components to the Zipscreen manufacturer only.

The Rollease Acmeda 5 year hardware warranty is applicable to normal use and assumes the blinds are not used in strong winds/storms and not left down indefinitely.

The Rollease Acmeda 5 year hardware warranty will not apply where the defect arises due to incorrect assembly and installation.

The Rollease Acmeda 5 year hardware warranty is not applicable for coastal applications.

Zipscreen manufacturers to determine specific warranty for overall system (hardware and fabric).

Retailers are obliged to supply consumers with their own warranty, if required, at the point of purchase.

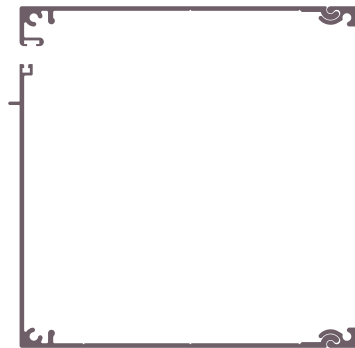


SYSTEM OPTIONS

CONTROL OPTIONS



Motor



BOX 120

COLOR OPTIONS



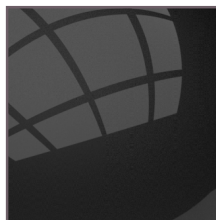
069

WHITE



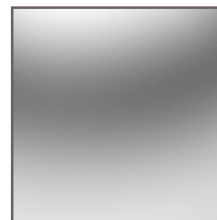
425

PAPERBARK



050

BLACK



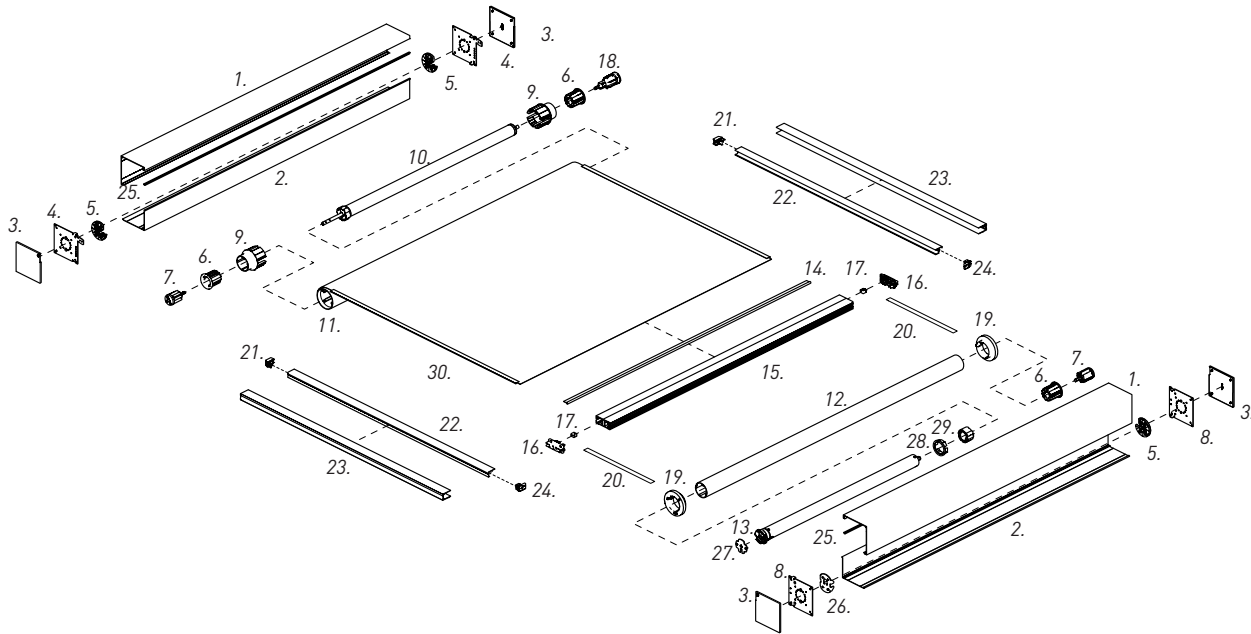
020

ANODISED



GENERAL SCHEMATICS

ZIPSCREEN



SYSTEM INDEX:

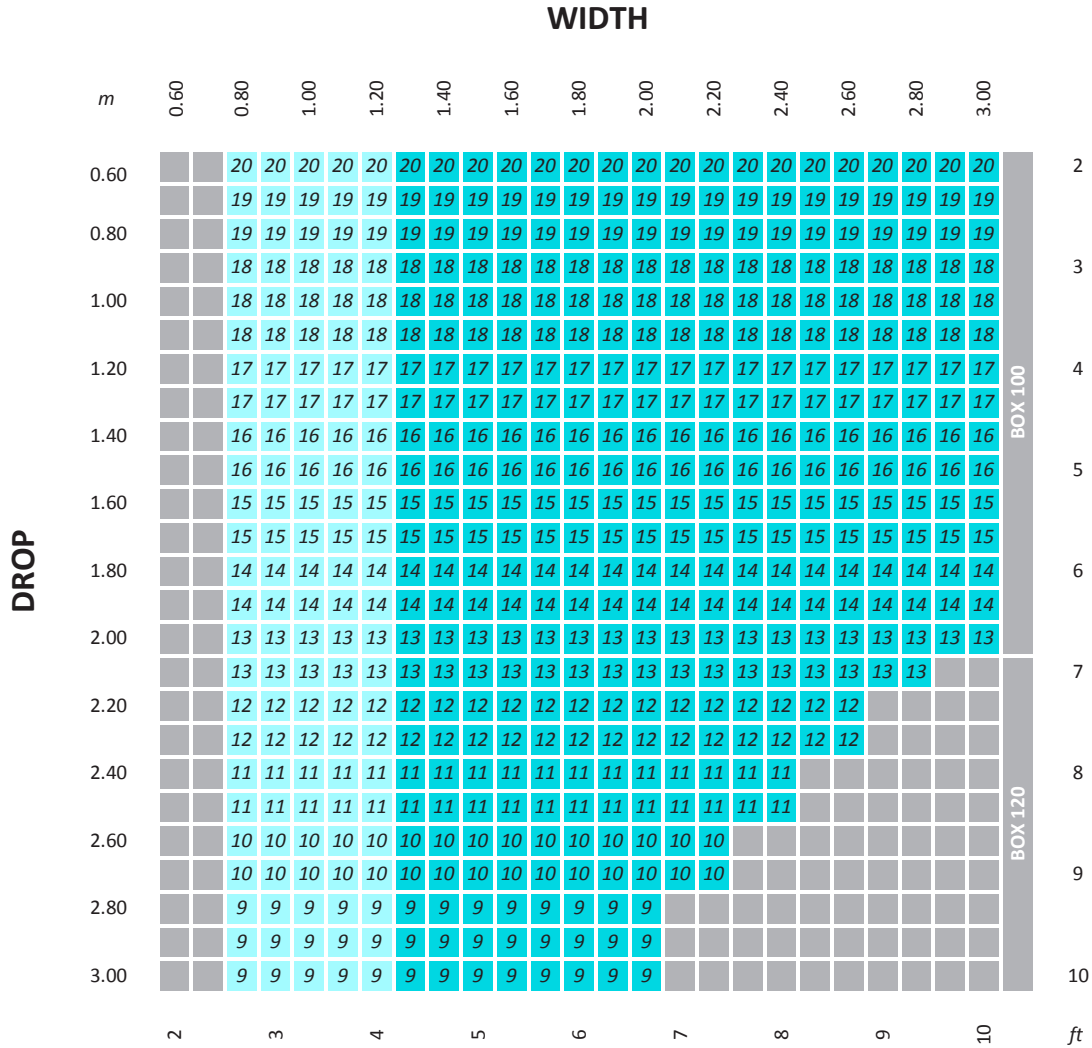
- | | |
|--|-------------------------------------|
| 1. Box Top & Back | 16. F56 Multi-Bar End Cap |
| 2. Box Cover | 17. F56 Multi-Bar Cord Guides Set |
| 3. Box End Plate Cover | 18. RB10 Pre-Tension Idler |
| 4. Box End Plate with Ears | 19. Skylight Tape Spool |
| 5. RB10 Idler Head Adapter | 20. Lift Tape |
| 6. RB10 Tube Adapter | 21. Inner Rail Skylight Funnel |
| 7. RB10 Bearing Idler | 22. Zip Inner Rail |
| 8. Box End Plate w/out Ears | 23. 'U' Mounting Rail |
| 9. Zip Tube Reducer Long | 24. Inner Rail Zip Funnel |
| 10. RB10 Booster | 25. Fabric Brush T Slot Fit |
| 11. 60 STD/80 HD Aluminium Fabric Tube | 26. Motor Adapter |
| 12. 60 STD Aluminium Tube | 27. Motor Head Plate S60 |
| 13. AUTOMATE Motor 15Nm | 28. Crown Wheel S60 |
| 14. 7.2mm Spline | 29. Drive Wheel Set S60 |
| 15. F56 Weight Bar | 30. Fabric Zip |



SECTION D | SYSTEM SPECIFICATIONS (ZIPSCREEN)

ZIPSCREEN | 60MM FABRIC TUBE

PARAMETERS: FABRIC: 420GSM (12.4OZ/YD²), WEIGHT/HEM BAR: F72 HD



LEGEND	DESCRIPTION
	Short Booster
	EXTRA Heavy Booster
	Pre-Turns Required
	Cannot be achieved - outside product specifications

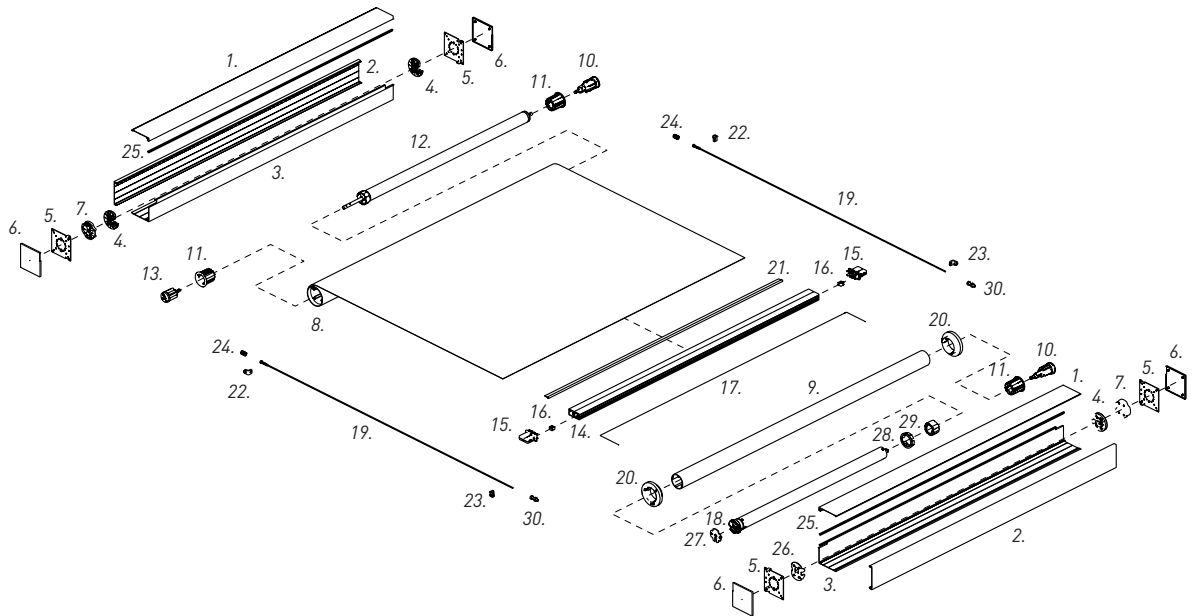


www.shadesbymatiss.com | T. 800 493 2040 | email: info@shadesbymatiss.com

SECTION E | OVERVIEW (WIREGUIDE)

GENERAL SCHEMATICS

WIREGUIDE



SYSTEM INDEX:

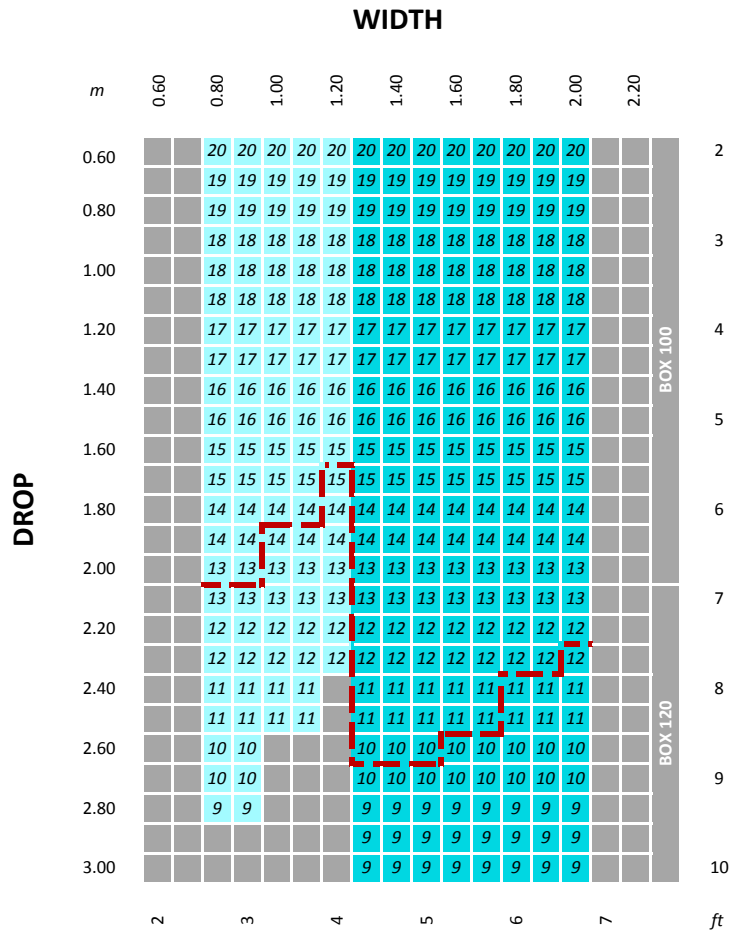
- | | |
|---------------------------------------|------------------------------|
| 1. Box Top | 16. Wire Guide Ceramic Block |
| 2. Box Back | 17. Lift Tape/Cord |
| 3. Box Cover | 18. AUTOMATE Motor 15Nm |
| 4. RB10 Idler Head Adapter | 19. 3.2mm Wire Cable |
| 5. Universal End Plates | 20. Skylight Tape Spool |
| 6. End Plate Cover Set | 21. 7.2mm Spline |
| 7. RB10 Idler Adapter Spacer | 22. Wire Rope - Top Bracket |
| 8. 60 STD/80 HD Aluminium Fabric Tube | 23. Tensioning L-Bracket |
| 9. 60 STD Aluminium Tube | 24. Compression Spring |
| 10. RB10 Pre-Tension Idler | 25. Fabric Brush T Slot Fit |
| 11. RB10 Tube Adapter | 26. Motor Adapter |
| 12. RB10 Booster | 27. Motor Head Plate S60 |
| 13. RB10 Bearing Idler | 28. Crown Wheel S60 |
| 14. F56 HD Weight Bar | 29. Drive Wheel Set S60 |
| 15. F56 Skylight Wire Guide End Cap | 30. Threaded Hollow Bolt |



SECTION F | SYSTEM SPECIFICATIONS (WIREGUIDE)

WIREGUIDE | 60MM FABRIC TUBE

PARAMETERS: FABRIC: 420GSM (12.4OZ/YD²), WEIGHT/HEM BAR: F56 HD



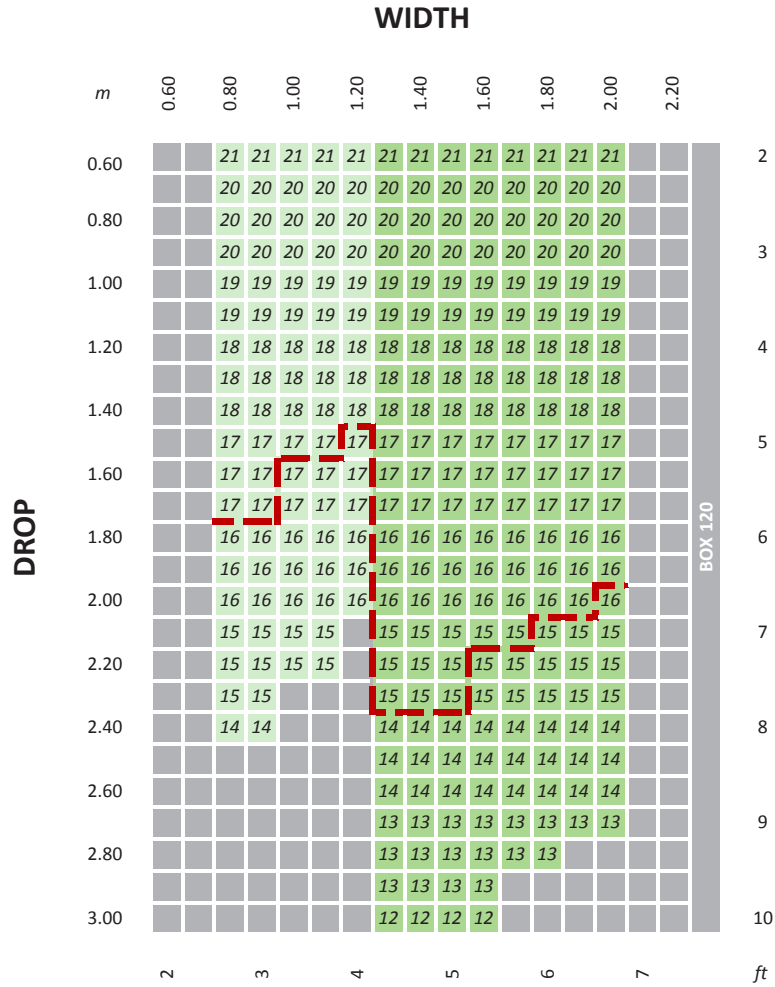
LEGEND	DESCRIPTION
	Short Booster
	EXTRA Heavy Booster
	Optimal fabric Performance
	Pre-Turns Required
	Cannot be achieved - outside product specifications








SECTION F | SYSTEM SPECIFICATIONS (WIREGUIDE)

WIREGUIDE | 80MM FABRIC TUBE (BOX 120 ONLY)

PARAMETERS: FABRIC: 420GSM (12.4OZ/YD²), WEIGHT/HEM BAR: F56 HD

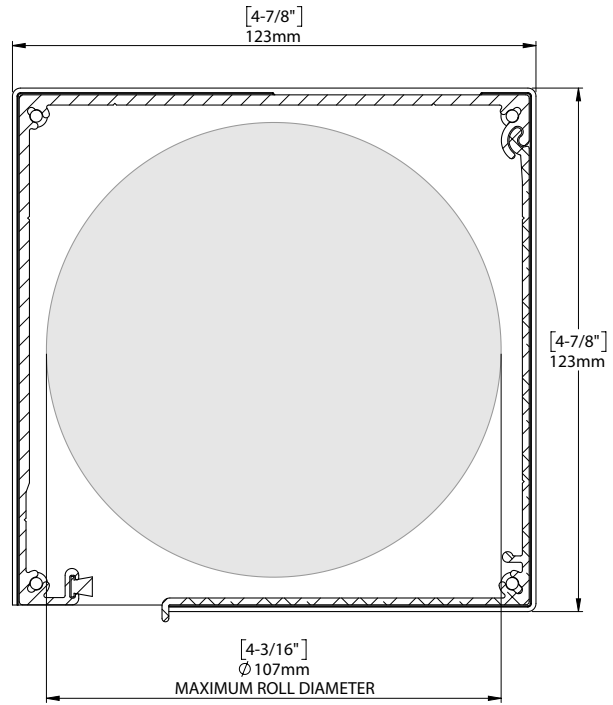


LEGEND	DESCRIPTION
	Short Booster
	EXTRA Heavy Booster
	Optimal fabric Performance
	Pre-Turns Required
	Cannot be achieved - outside product specifications



MAXIMUM ROLL DIAMETERS

BOX 120



MAXIMUM DROP

Zipscreen / Wire Guide = 3.0m [9' - 10"] (80mm tube)



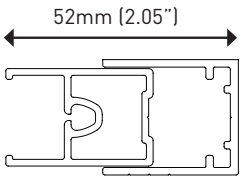
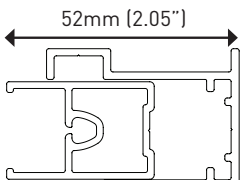
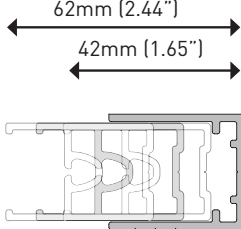
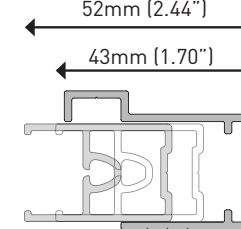
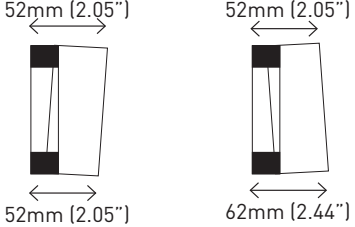
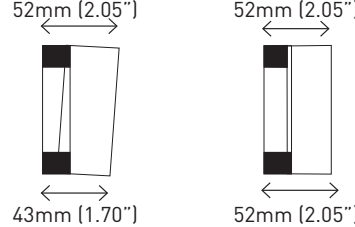
ZIPSCREEN MEASURE & SPECIFY

In order to assist with providing seamless communication between the Specifier, Assembler and Installer, Rollease Acmeda are providing some guidelines to assist with measuring and specifying the Zipscreen system in order to:

- Identify key information for Assembler and Installer
- Improve efficiency
- Limit the number of re-calls / adjustment required on site after installation

The suggested 'Actual Shade Sizes' are based on:

- Minimum clearances to assist installers (some installers may request greater clearances for some application, e.g. installing onto brick)
- Having the Inner Rail installed at 52mm (2.05") at the fabric end when installed

U MOUNTING RAIL & INNER RAIL	WALL MOUNT U MOUNTING RAIL & INNER RAIL
	
	
<p>Consequently 20mm (0.79") adjustment is provided by Side Guides on both sides (catering for out-of-square walls)</p>	<p>9mm (0.35") adjustment (+ 0", - 10mm (0.39") from 52mm (2.05")) is provided by Side Guides on both sides (catering for out-of-square walls)</p>
	

When measuring space and using Wall mount U Mounting Rail, ensure there is enough distance from the wall edge for a fastener. This is important when installing into concrete, solid or hollow bricks, masonry or natural stones. It is advised to allow 70mm (2.75") from edge to edge of surface.

Compromise between minimizing packing for installer (plus, overall appearance for end user) and simplifying process/communication for specifier.

Recommended 'Actual Shade Widths' are determined based on 10mm (0.39") difference between Top, Center and Bottom values.

To simplify the specifier's task 'Actual Shade Widths' could be based on the smallest size – however more packing will be required at installation.

To minimize the packing required, further analysis into where the walls are out-of-square could be undertaken (and potentially adjusting the recommended deductions / installing at '52mm (2.05")' at the top), however very clear communication between specifier, Assembler and Installer is required.